

Challenge #18

If the pitch of Bertrand Russell's roof is $\frac{5}{12}$ and his house measures 24 m across the front and 40 m from front to back, how many square meters of roof will he have (assuming no overhang)?



Challenge #18 Solution

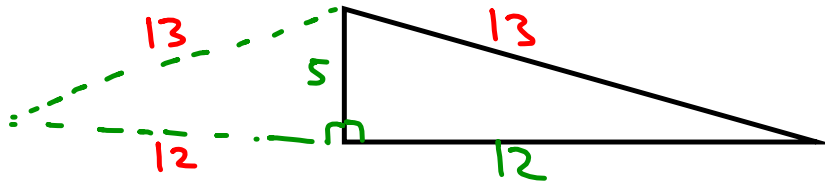
pitch = 5/12

House: 24 m across and 40 m deep.

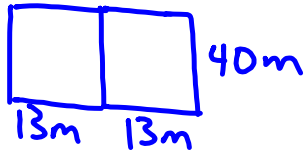
use Pythagorean
Thm:

$$5^2 + 12^2 = d^2$$

$$d = 13$$



roof:



$$A = 13(40)(2) = 1040 \text{ m}^2$$